



Damask

A pattern formed by weaving. Damasks are woven with one warp yarn and one weft yarn, usually with the pattern in warp-faced satin weave and the ground in weft-faced or sateen weave.

Custom Carpet Design in 7 Simple Steps

As a designer brand for carpets, we strongly believe in the freedom of custom design. And we take that freedom literally. We go beyond dreaming and make it possible to bring your ideas to live. At Sisal you can:

Start from our existing collections and change colour or design.

Start from a sketch.

Or from scratch.

Whatever you choose, you'll always be guided and advised by our creative and talented design team throughout the entire process. Discover below how you can design your custom carpet in 7 simple steps.

Contact - Already made up your mind or stuck with a faint idea about the carpet design you're looking for? We're happy to listen to your thoughts and get you started on your custom carpet.

Brainstorm - The best ideas come from combined creativity. Brainstorm with our team and find the pattern and colours you're looking for.

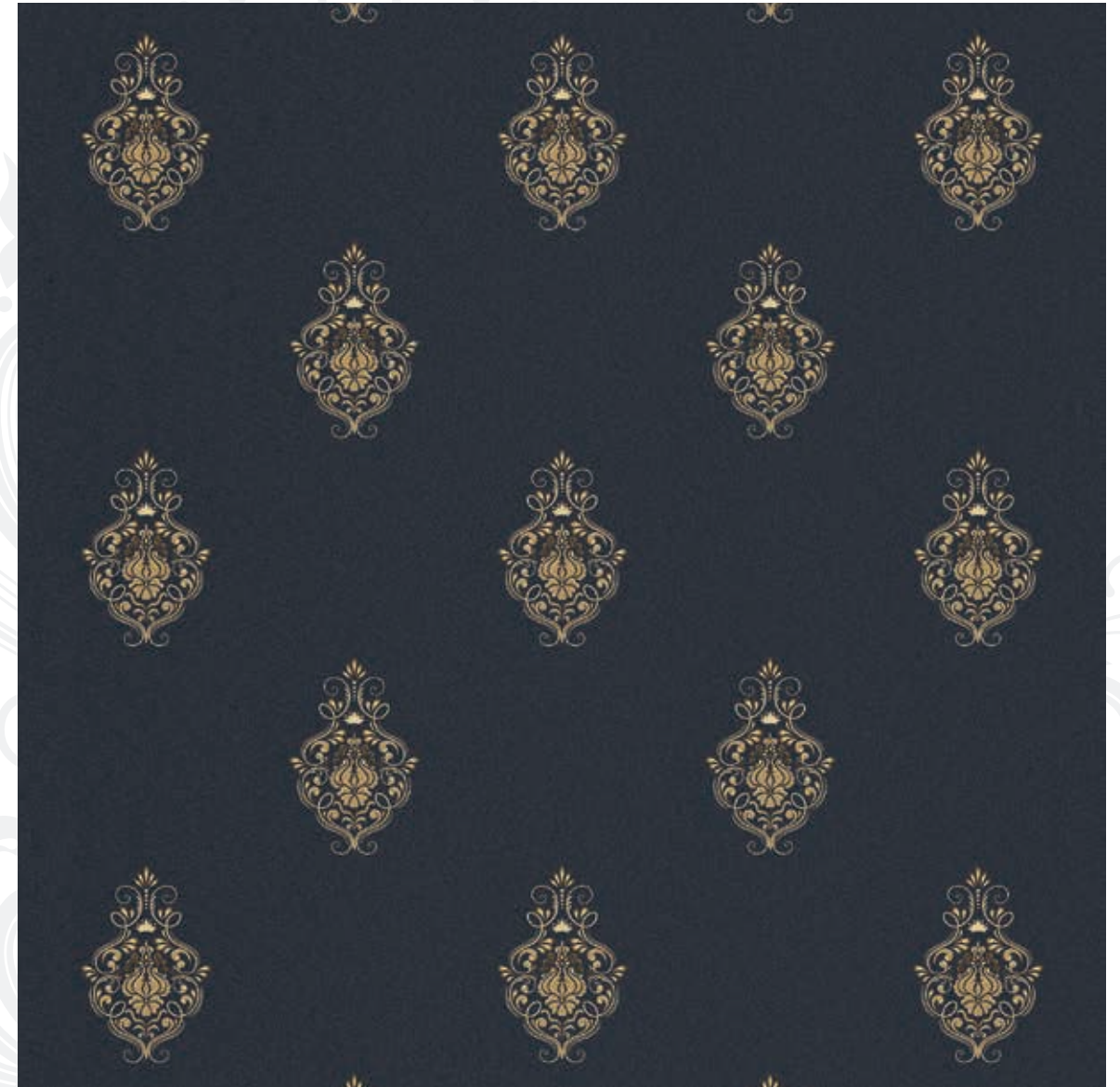
Digital draft - Once the desired design has been defined, we produce your dream design in digital format.

Lab sample - After approval of the digital draft and the selection of your base cloth, you'll get an actual lab sample in the selected carpet quality.

Final approval - Once you have approved the colours, designs and quality of the lab sample, we start with the production of your custom carpet.

Production - We guarantee a very fast production and delivery time. No delays, only a smooth project flow.

Delivery - Your custom carpet is transported immediately to your project location and is ready for fitting.



Code: DA-0010



Code: DA-0004



Code: DA-0010



Code: DA-0048



Code: DA-0002



Code: DA-0013



Code: DA-0007



Code: DA-0001 B



Code: DA-0005 A



Code: DA-0009



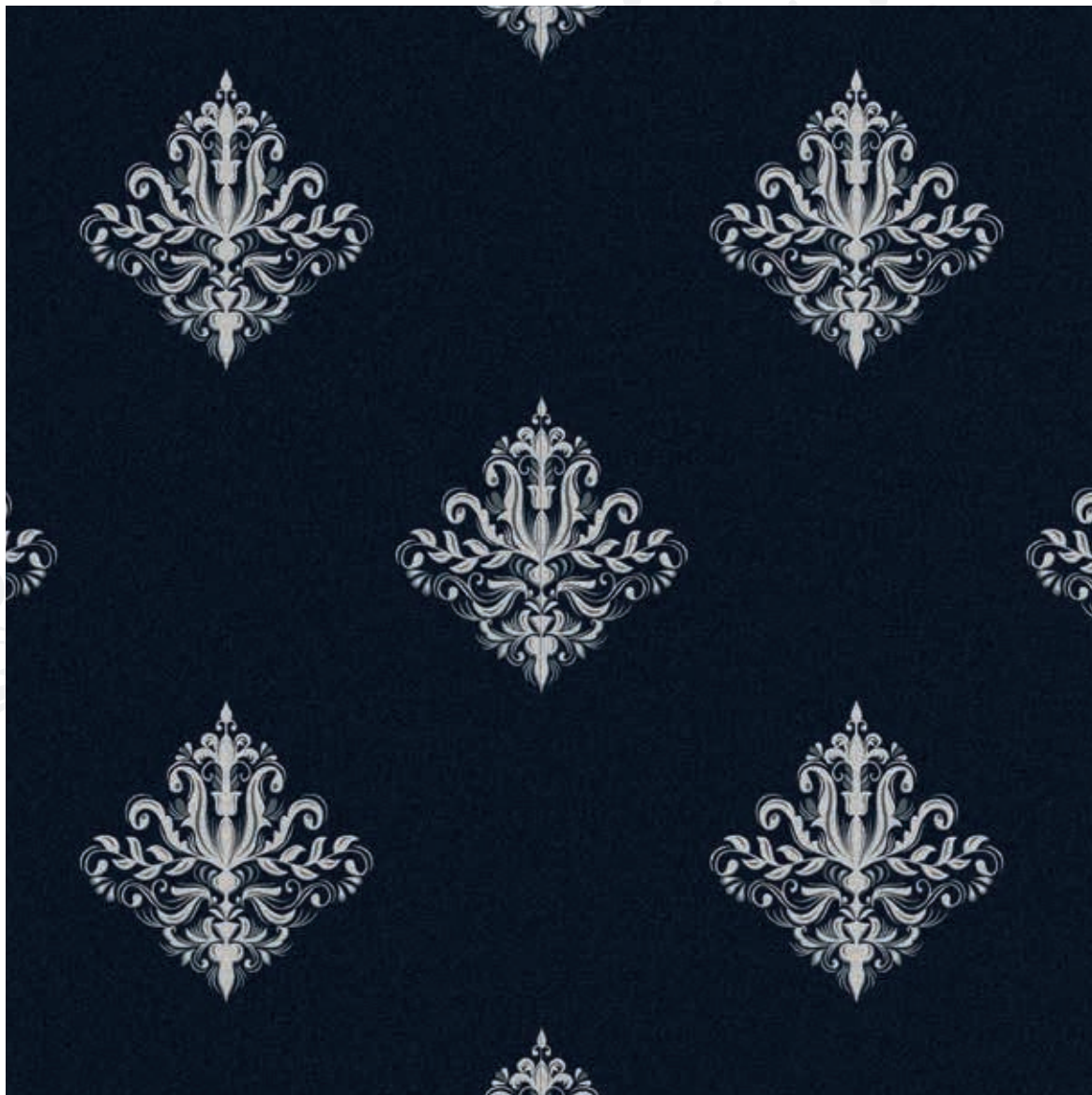
Code: DA-0016 A



Code: DA-0003



Code: DA-0006 B



Code: DA-0015 A



Code: SE-0002



Code: SE-0001



Code: SE-0005



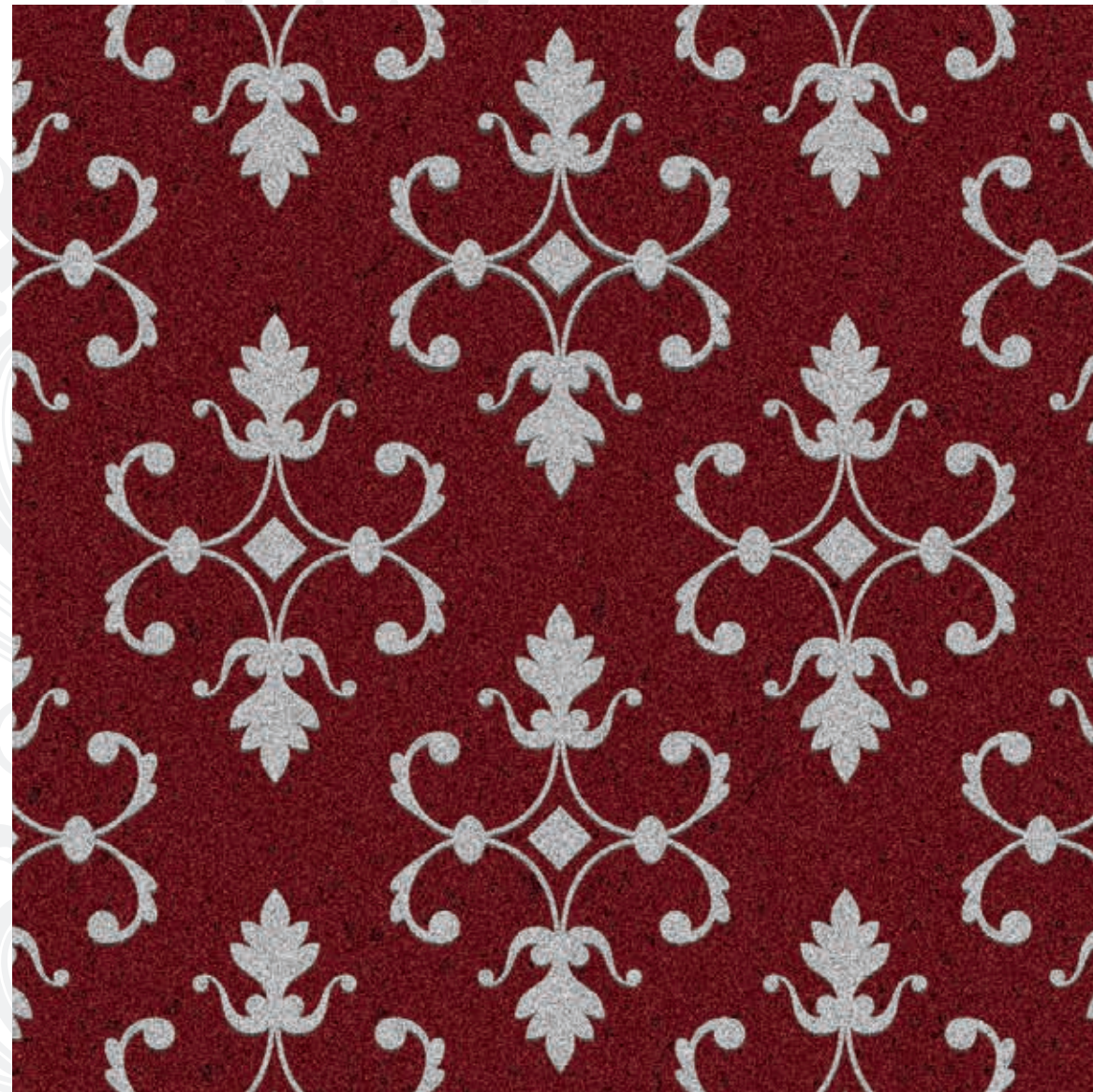
Code: SE-0003



Code: SE-0006



Code: SE-0007



Code: SE-0008



Code: SE-0009



Code: DA-0045



Code: DA-0046



Code: DA-0047



Code: DA-0048



Code: DA-0049



Code: DA-0050



Code: DA-0051



Code: DA-0052



Code: DA-0051



Code: DA-0054



Code: DA-0055



Code: DA-0060



Code: DA-0055



Code: DA-0059





Hamburger Str. 3
22083 Hamburg
Germany
www.sisal.global